

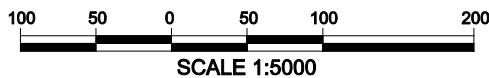
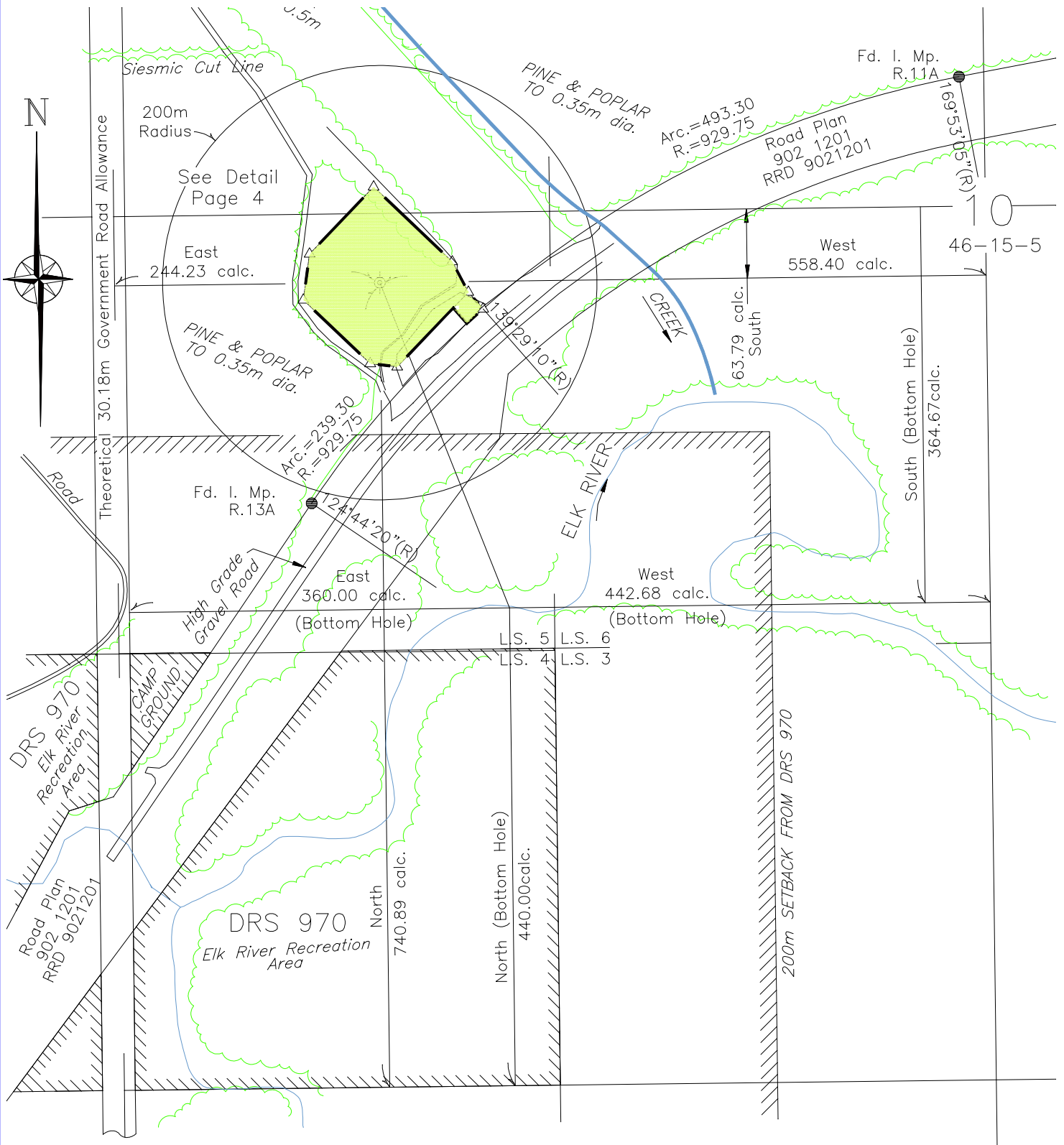
Plan Showing Survey of Directional Drill Well Site and Access Road

# BLAZE et al BRAZEAU RIVER 5-10-46-15

from a surface location

**L.S. 5 Sec. 10 Twp.46 Rge.15 W.5th Mer.**

**Yellowhead County**



LAND USE	
AOA 060011	PRIMEWEST ENERGY INC.
FMA 9700032	SUNDANCE FOREST INDUSTRIES LTD.
TPA 883	DANNY KOS - DRAYTON VALLEY, ALBERTA

TIMBER SALVAGE	
WELLSITE :	
NEW CUT =	0.0 ha.
EXISTING CLEARING =	0.0 ha.

**PROPOSED LOC ROAD**  
Width of LOC = 20m  
Length of LOC = 20.61m

NOTE:  
Bearings are astronomic referred  
Through N.E. 33-44-15-W.5M.